



Company Sas Powertech Pvt. Ltd. Tester :
Mr. Abhijit Katre
Phone: 020-25533015
E-Mail: solutions@saspowertech.com

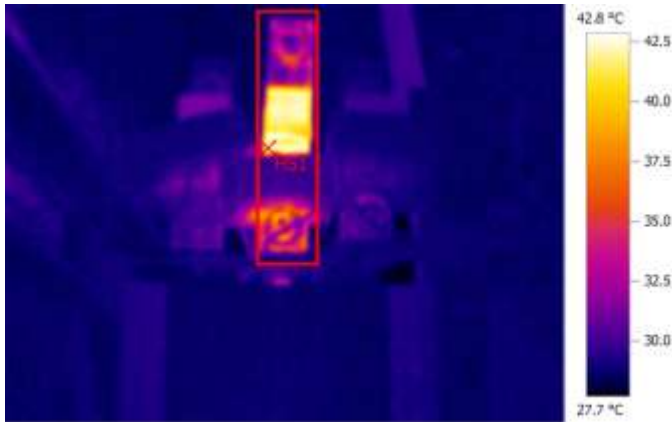
Device testo 875-2 Serial No.: 2024805

Customer

Task Thermographic analysis of electrical system

File:

IV_03880.BMT



Picture markings:

Measurement Objects	Temp. [°C]	Remarks
Hot spot 1	42.8	-

Remarks:

Location: Main LT Panel Room

Equipment: Main LT Panel/ Feeder- 3F1 (Utility Panel)

Findings: Marked Y-Phase outgoing busbar of switch may be loose at termination

Recommendations: Inspect, clean & tight connection at terminals and related components.

Repair priority: 2 (Repair soonest possible)

Repaired by:

Date:

Repairman comment:

File:

IV_03881.BMT



Picture markings:

Measurement Objects	Temp. [°C]	Remarks
Hot spot 1	32.6	-

Remarks:

Location: Main LT Panel Room

Equipment: Main LT Panel/ Feeder- 5F2 (Nexplicit)

Findings: Marked B-Phase incoming busbar termination at switch may be loose.

Recommendations: Inspect, clean & tight connection at terminals and related components.

Repair priority: 2 (Repair soonest possible)

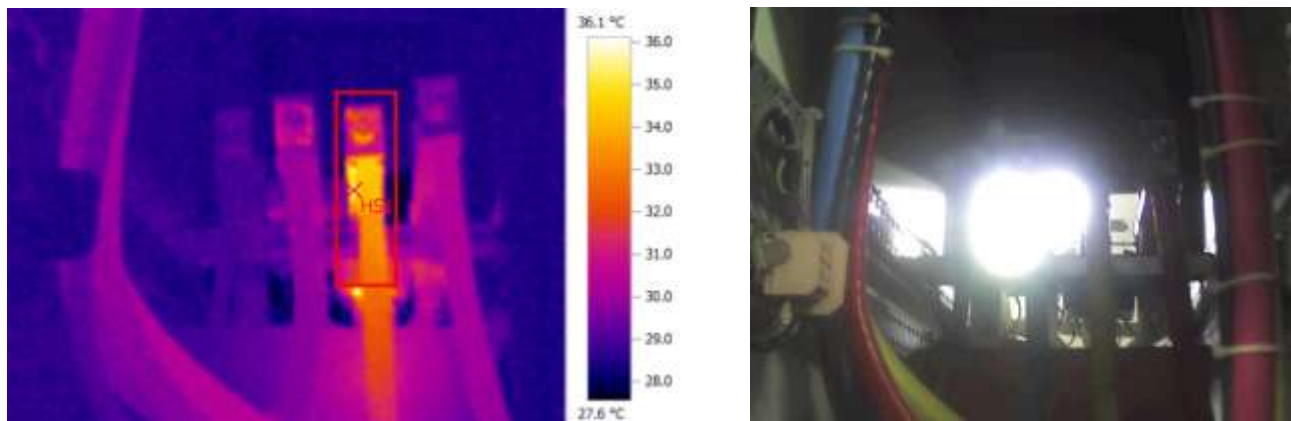
Repaired by:

Date:

Repairman comment:

File:

IV_03886.BMT



Picture markings:

Measurement Objects	Temp. [°C]	Remarks
Hot spot 1	36.1	-

Remarks:

Location: Main LT Panel Room

Equipment: Main LT Panel/ Feeder- 3F1 (Utility Panel) Cable Chamber

Findings: Crimping of marked Y-Phase outgoing cable may be loose.

Recommendations: Inspect, clean & tight connection at terminals and related components.
Also re-crimp or replace cable lug if required.

Repair priority: 2 (Repair soonest possible)

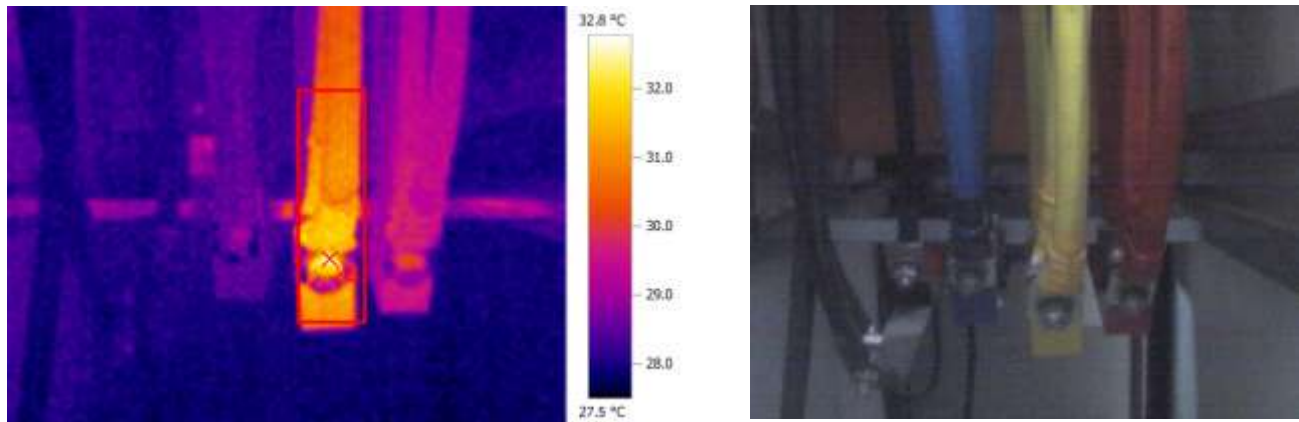
Repaired by:

Date:

Repairman comment:

File:

IV_03887.BMT



Picture markings:

Measurement Objects	Temp. [°C]	Remarks
Hot spot 1	32.8	-

Remarks:

Location: Main LT Panel Room

Equipment: Main LT Panel/ Feeder- 9F2 (Kone Crane) Cable Chamber

Findings: Crimping of marked Y-Phase outgoing cable may be loose.

Recommendations: Inspect, clean & tight connection at terminals and related components.
Also re-crimp or replace cable lug if required.

Repair priority: 2 (Repair soonest possible)

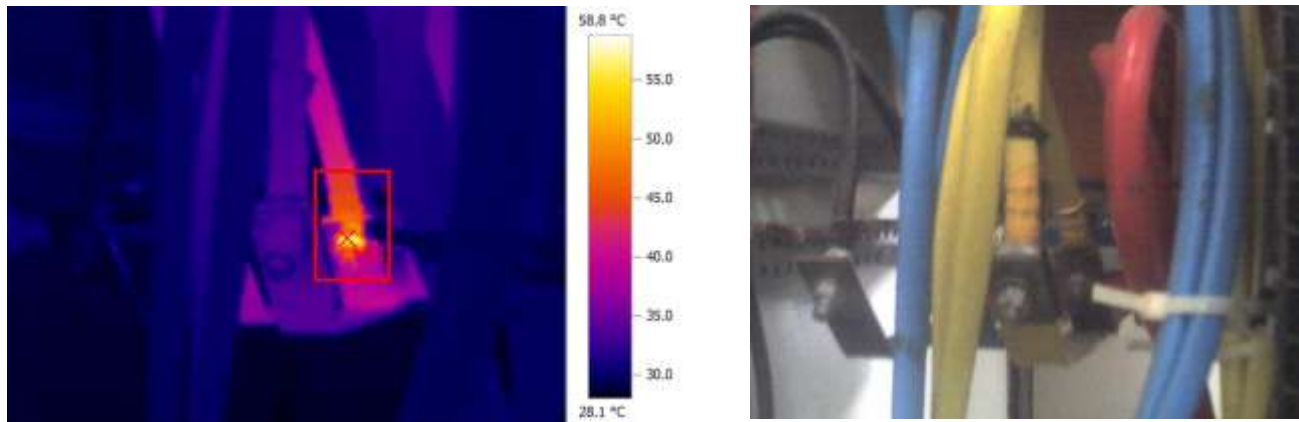
Repaired by:

Date:

Repairman comment:

File:

IV_03888.BMT



Picture markings:

Measurement Objects	Temp. [°C]	Remarks
Hot spot 1	58.8	-

Remarks:

Location: Main LT Panel Room

Equipment: Main LT Panel/ Feeder- 10F2 (Marvell-3)

Findings: Marked Y-Phase outgoing cable termination may be loose.

Recommendations: Inspect, clean & tight connection at terminals and related components.

Repair priority: 2 (Repair soonest possible)

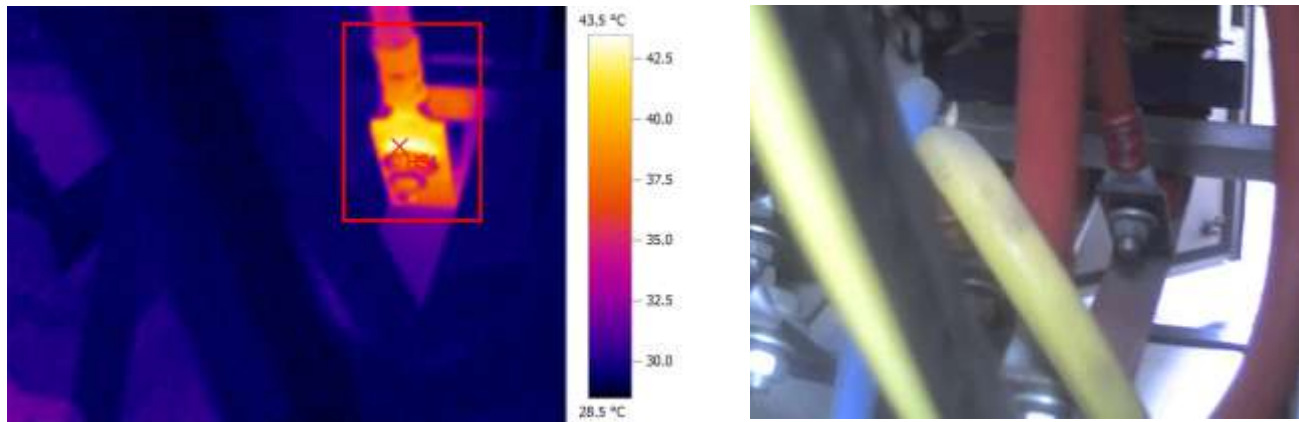
Repaired by:

Date:

Repairman comment:

File:

IV_03889.BMT



Picture markings:

Measurement Objects	Temp. [°C]	Remarks
Hot spot 1	43.5	-

Remarks:

Location: Main LT Panel Room

Equipment: Main LT Panel/ Feeder- 21F2 (Marvell-2)

Findings: Marked R-Phase outgoing cable termination may be loose.

Recommendations: Inspect, clean & tight connection at terminals and related components.

Repair priority: 2 (Repair soonest possible)

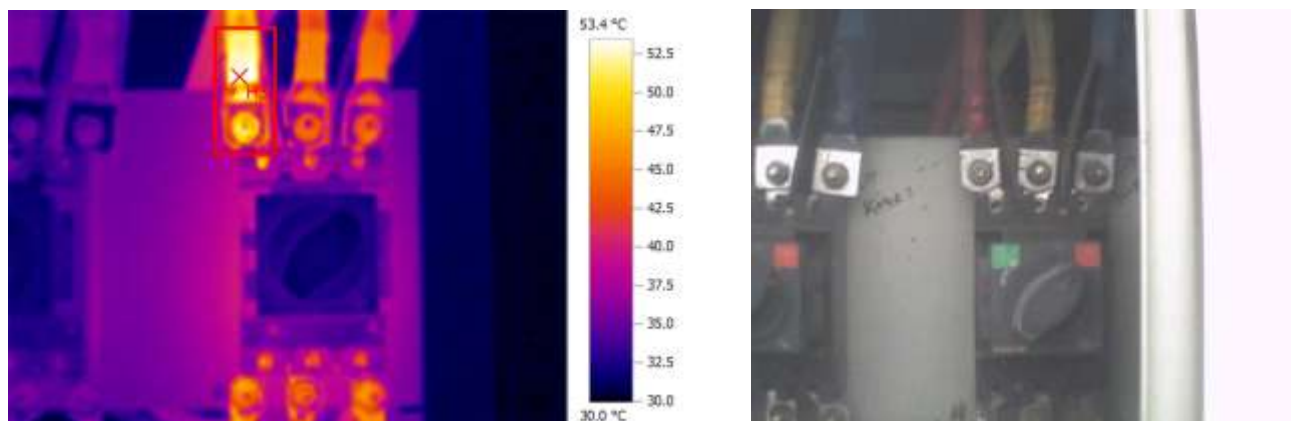
Repaired by:

Date:

Repairman comment:

File:

IV_03893.BMT



Picture markings:

Measurement Objects	Temp. [°C]	Remarks
Hot spot 1	53.4	-

Remarks:

Location: Main LT Panel Room

Equipment: Commercial Tenant Panel/ Kone-2 Feeder

Findings: Crimping of marked R-Phase outgoing cable may be loose.

Recommendations: Inspect, clean & tight connection at terminals and related components.
Also re-crimp or replace cable lug if required.

Repair priority: 2 (Repair soonest possible)

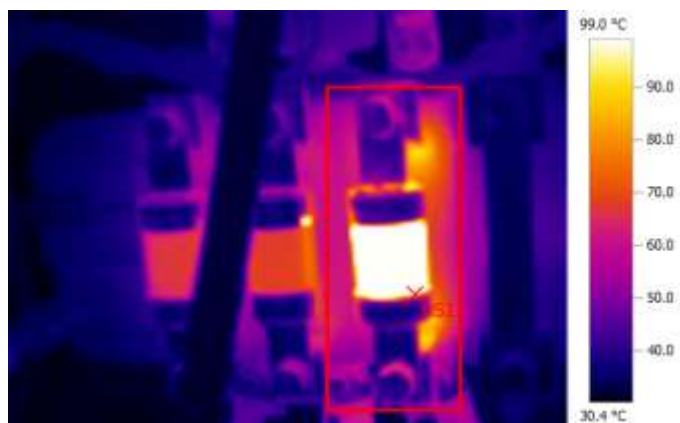
Repaired by:

Date:

Repairman comment:

File:

IV_03894.BMT



Picture markings:

Measurement Objects	Temp. [°C]	Remarks
Hot spot 1	98.0	-

Remarks:

Location: Main LT Panel Room

Equipment: Commercial Tenant Panel/ Texas Feeder

Findings: Marked R-Phase fuse over heated

Recommendations: Inspect, clean & tight connection at terminals and related components.
Also replace fuse if required.

Repair priority: 1 (Repair immediately)

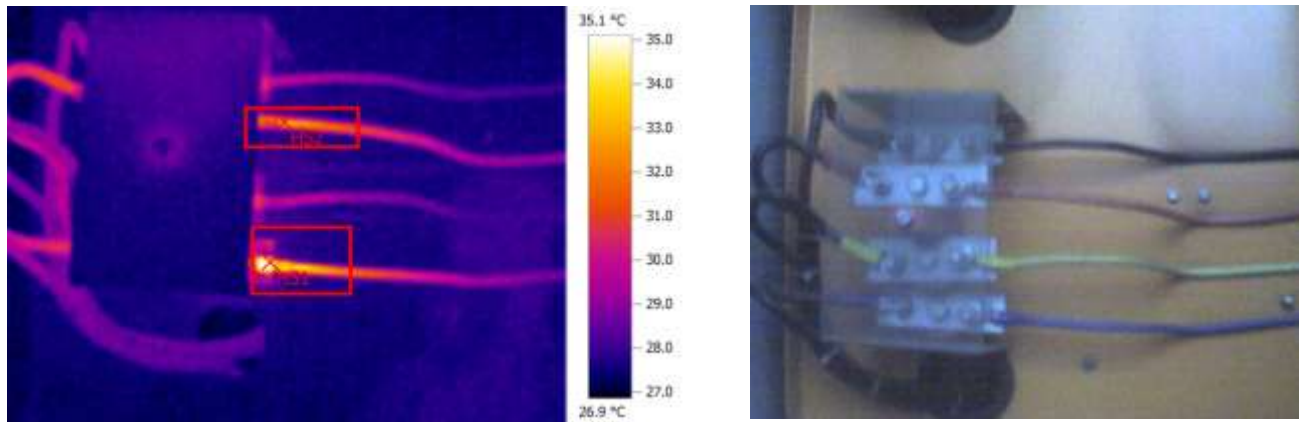
Repaired by:

Date:

Repairman comment:

File:

IV_03895.BMT



Picture markings:

Measurement Objects	Temp. [°C]	Remarks
Hot spot 1	35.1	-
Hot spot 2	33.0	-

Remarks:

Location: Main LT Panel Room

Equipment: Lighting DB

Findings: Crimping of marked R & B-Phase outgoing cable lugs may be loose

Recommendations: Inspect, clean & tight connection at terminals and related components.
Also re-crimp or replace cable lugs if required.

Repair priority: 2 (Repair soonest possible)

Repaired by:

Date:

Repairman comment:

General remarks are as below:

- 1) All recommendation and suggestions are subjected to load condition and pattern at the time of measurement.
 - 2) Clean all loose contact termination and then tight connection.
-

DATE: _____

Mr. Abhijiit Katre